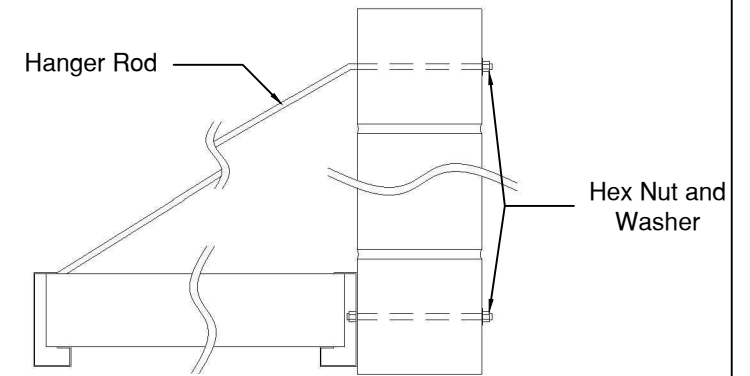
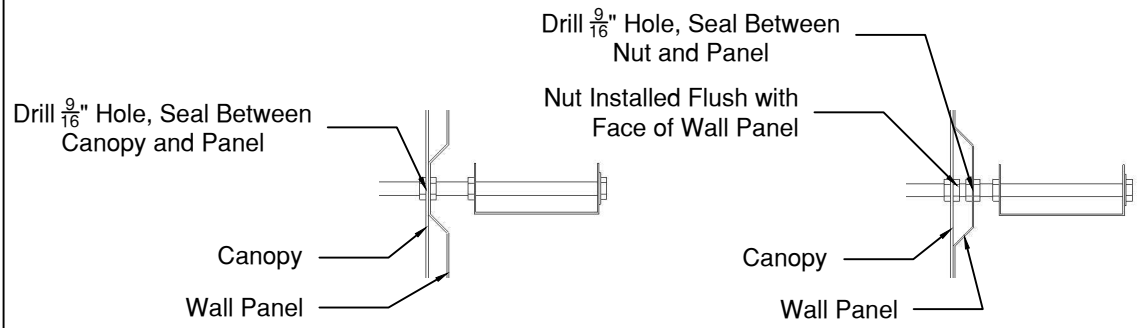
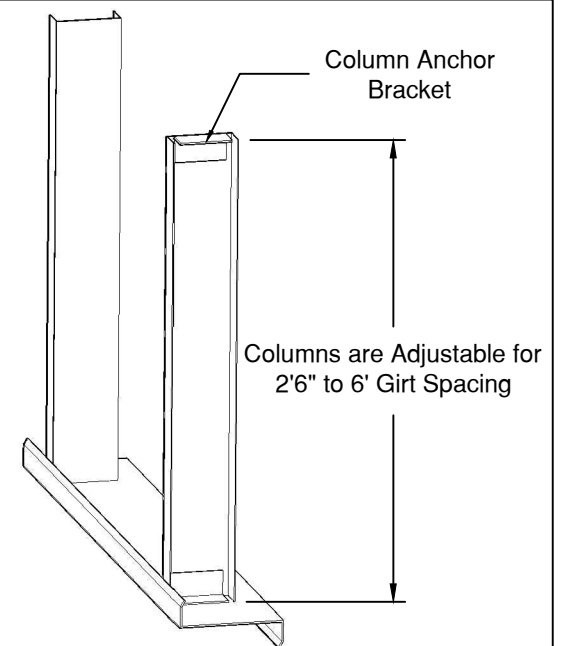
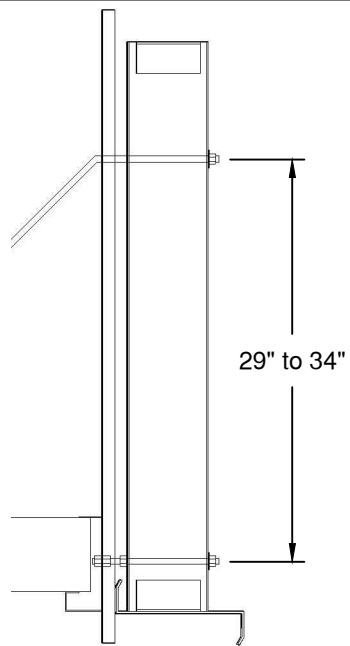
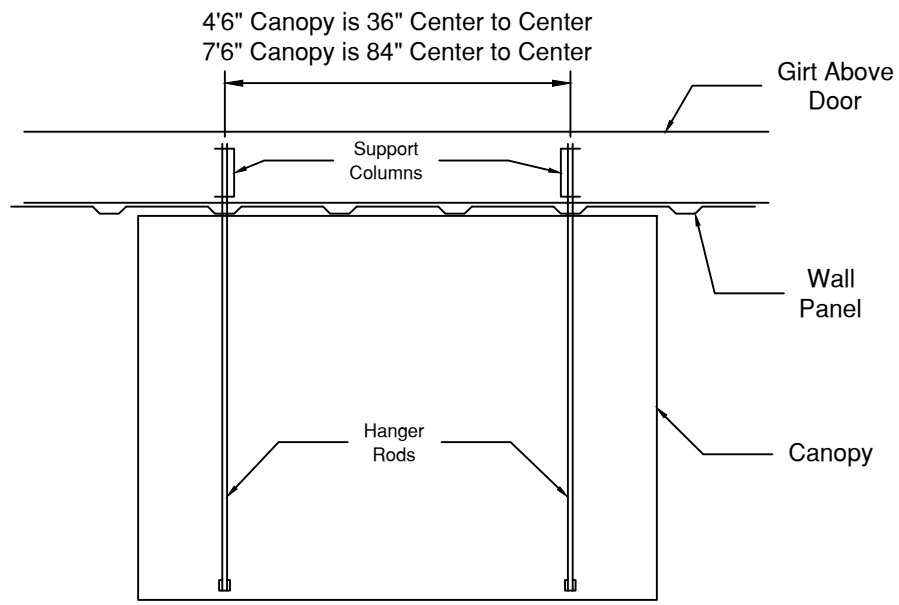


- **Steel Building Installation**

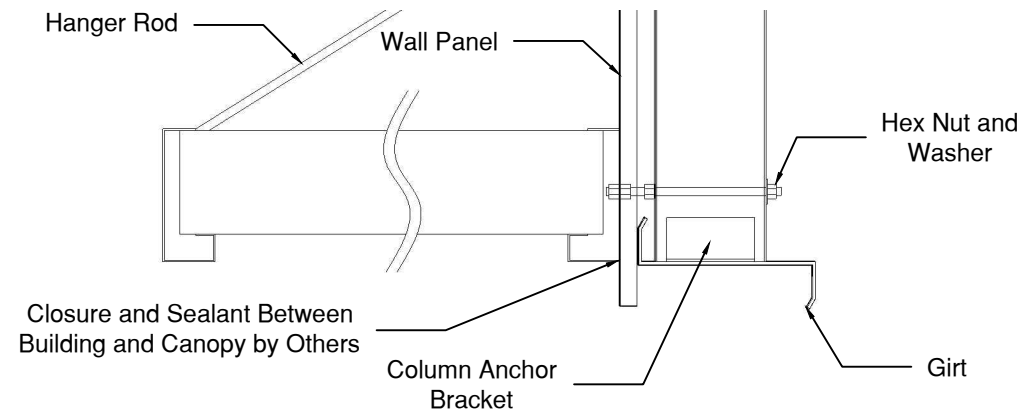
- Determine where the center of the door is. From the center of the door measure up 4 ½" and make a mark. This will be the center of the canopy. From that mark measure 18" to each side. This will be the location of the lower mounting holes for the canopy. If this falls on the downslope of a rib, shift both holes either to the left or to the right so it is in the flat or on top of a rib. Once the location is determined drill a 9/16" hole into the building.
- On the interior of the building, install the provided subframe supports between girts in front of the previously drilled hole. Make sure to leave 2" of space between the subframe and the exterior paneling. Attach the subframes to the girts with the provided girt clips. Once installed drill a 9/16 hole from the outside of the building using the same hole from the previous step.
- Insert the ½" bolt from the inside to the outside making sure that once through the subframe you insert a ½" jamb nut. Turn the bolt on the nut until the bolt sticks outside of the building and is snug against the subframe.
- Place the canopy onto bolts and secure it using the provided washer and nut.
- Attach support arms to the canopy front fascia and rest against the building. Drill a 9/16" hole into the building and through the subframes previously installed. Using the provided "I" bolt turn a nut all the way up to the eye of the bolt. Insert "I" bolt into the building and through the subframe and secure with a nut.
- Attach support arms to "I" bolts using the provided clevis Pins. Secure clevis pins with the provided cotter pins.
- Make sure the canopy is level from left to right and tilts back towards the building no more than 5 degrees.
- Seal against building as desired
- (optional)
  - If a light was provided with your canopy, drill a ½" hole into the building to receive the electrical connection from the canopy.

- **Masonry Building Installation**

- Determine where the center of the door is. From the center of the door measure up 4 ½" and make a mark. This will be the center of the canopy. From that mark measure 18" to each side. This will be the location of the lower mounting holes for the canopy. Drill 2 9/16" holes in these locations.
- From the inside insert a ½"-13 bolt provided through the masonry block to the outside of the building. On the outside of the building place a washer and nut on the bolt and tighten against the masonry block.
- Place the canopy onto bolts and secure it using the provided washer and nut.
- Attach support arms to the canopy front fascia and rest against the building. Drill a 9/16" hole into the building. Using the provided "I" bolt turn a nut all the way up to the eye of the bolt. Insert "I" bolt into the building and secure it with a nut on the inside.
- Attach support arms to "I" bolts using the provided Pins.
- Make sure the canopy is level from left to right and tilts back towards the building no more than 5 degrees.
- Seal against building as desired
- (optional)
  - If a light was provided with your canopy, drill a 5/8" hole into the building to receive the electrical connection from the canopy.



Masonry Wall Attachment



Canopy Installation Procedure

